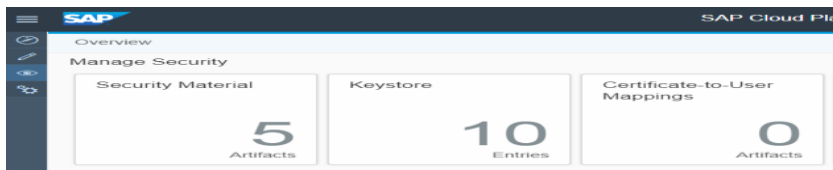


Once it is decided that SAP Cloud Platform Integration (SCPI) will be the integration platform that is best suited for your needs (Please refer to [Blog](#)), the next step is to gather information, assess different scenarios in scope for the project and start setting up SCPI as per your system requirements. The basic setup of the SCPI system is necessary to establish the communication between your systems and get the integration service ready for the incoming/outbound flows.

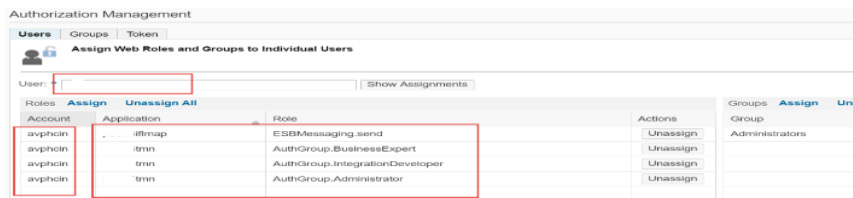
The key points to consider before setting up the integration platform for SCPI are:

- Identify all the systems to integrate
- Install/update patches if required on all systems
- Identify the people responsible for each role such as Integration expert, Functional/Configuration partner for each system
- Check the SAP pre-packaged content and scope out the requirements
- Check and update the artefacts which are provided by SAP on SCPI

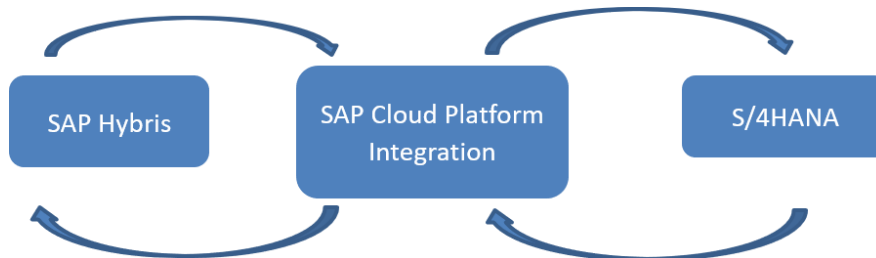
The SAP tenant provisioning mail for SCPI will have the details on how to access the SCPI web URL and also the runtime configuration URL. In case any of this information is missing in the mail, please raise a ticket with SAP. The client certificates required to establish secure connection between systems should be present in the Keystore in SCPI or they should be provided in the client provisioning mail. If you still don't get it, please raise a ticket with SAP for the same.



The admin user assigned by SAP needs to access the Hana cloud cockpit account and assign the integration authorization roles to the Integration user. The following screenshot displays the roles required to be assigned to the Integration user.



The basic setup between SAP C4C(SAP Hybris for Sales/Service) and SAP S/4HANA using SCPI is depicted below, as an example to show the setup required in SCPI.



The SAP guide for integration between SAP C4C (SAP Hybris Sales/Service), SCPI and S/4HANA system is available [here](#) and this link is also present in the Artefacts in SCPI. The guide provides the basic steps for configuration in each system and the master data integration flows.

But before we begin the setup, we need to make sure that the reverse proxy for communication between SCPI to On-premise system is in place. We can use either sap web dispatcher or sap cloud connector as our reverse proxy. It makes the connection between cloud applications and on-premise systems more secure, if a reverse proxy is used. No configuration is required in the

on-premise firewall to allow external access from cloud to internal systems. The reverse proxy exposes the services from on-premise system to the external systems.

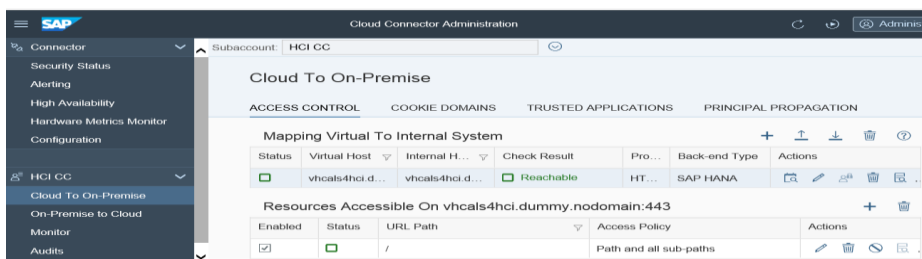
For our purposes we have used the SAP cloud connector. The cloud connector provides control over

1. The on-premise system and resources (HTTP or RFC) that shall be accessible by cloud applications.
2. iCloud applications that shall make use of Cloud CC connector.

The cloud connector is configured as per the client account in Hana cloud cockpit. It can be downloaded and installed from the SAP link for [cloud connector download](#).

Once the cloud connector is configured (refer link [Cloud connector config](#)), add the backend system to be connected, with the system details such as host name (from SICF), port for https, etc. and add the resources as "/" for all the paths and subpath.

When the backend system is up, it is displayed as "Reachable" on cloud connector and the resources are shown as available.



In SCPI, the steps necessary for a successful setup in line with the guide provided by SAP are given as follows. These steps hold true for any setup involving SCPI as the middleware.

- For security purposes, certificate-based authentication should be used. To implement a certificate-based authentication, the keystore has to be maintained in SCPI with all the relevant certificates used in communication between the systems
- Set up the users for C4C (C4C user used in Communication System) and S4HANA (S4HANA user used for communication) in SCPI Operations Views->Manage Security Material.
- For monitoring in SCPI go to Operations View -> Monitor Message processing.
- In Design view, configure the flows as per the communication scenario and deploy them
- The path in SCPI should be copied and used for configuration in SAP C4C and S/4HANA.
- The flows where S/4HANA is the receiver, the protocol host name points to the cloud connector. The cloud connector should be set up and running to establish this connection.
- Deploy the iflows after configuring and check if they are successfully deployed before testing.
- The message mapping/wSDL for an iflow can be modified from SCPI web URL or from Eclipse. Save as a new version each time the mapping is modified.

The flows involving master data setup and scenario specific setup in SAP C4C (SAP Hybris Sales/Service), SCPI and S/4HANA shall be discussed in the blogs to follow.

To summarise SCPI serves as an Integration service on cloud which can be deployed with comfortable ease. Also, with the administration maintenance provided by SAP along with their pre-packaged Integration solutions, it can be up and running very quickly. It is recommended to leverage this quick solution if you have to integrate a SAP cloud solution to SAP On Premise solution or SAP Cloud to SAP Cloud solution.

For all enquiries please contact at : corpinfo@accretel.com , Tel : +1(877)-849-5838
Visit us at : [Accrete Solutions](#)

USA
Head Office
3350 Scott Blvd, Bldg 34
Santa Clara, CA 95054

South Africa
609 Lanseria Corporate Estate,
Falcon Lane, Lanseria,
Gauteng

Chile
Galvarino Gallardo 1638,
Providencia,
Santiago

India
Development Centre
102A, HARTRON, Electronics City,
Gurgaon